

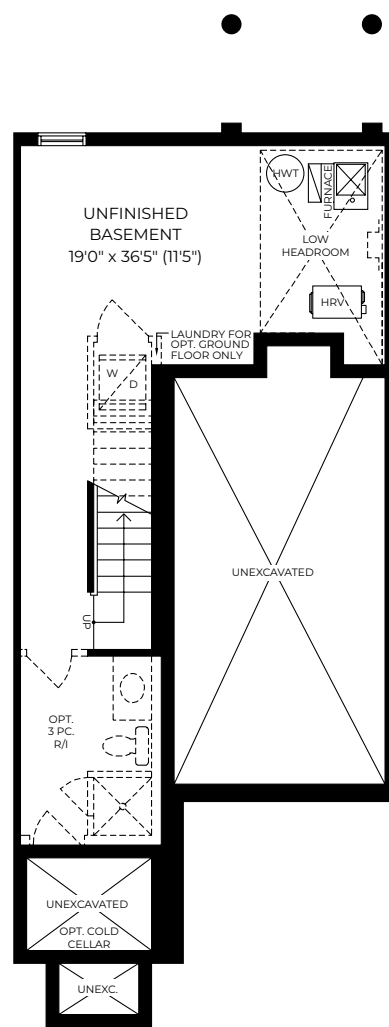
# THE PARK COLLECTION

STREET TOWNS

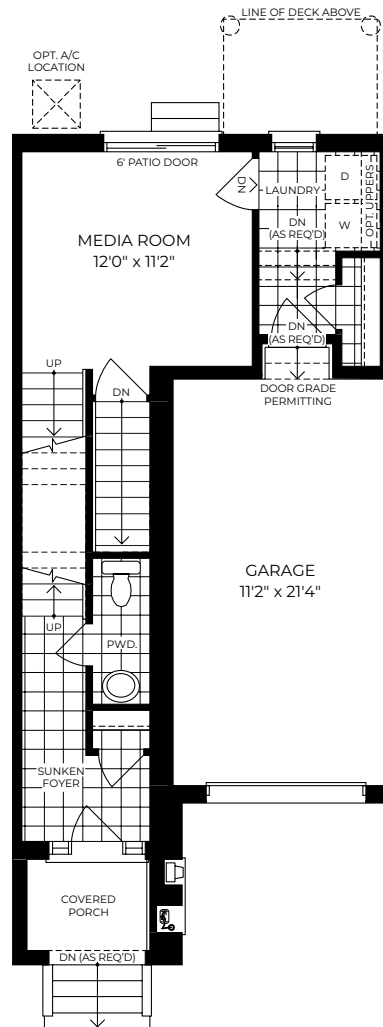
# BLOOMSBURY

1,714 SQ.FT.

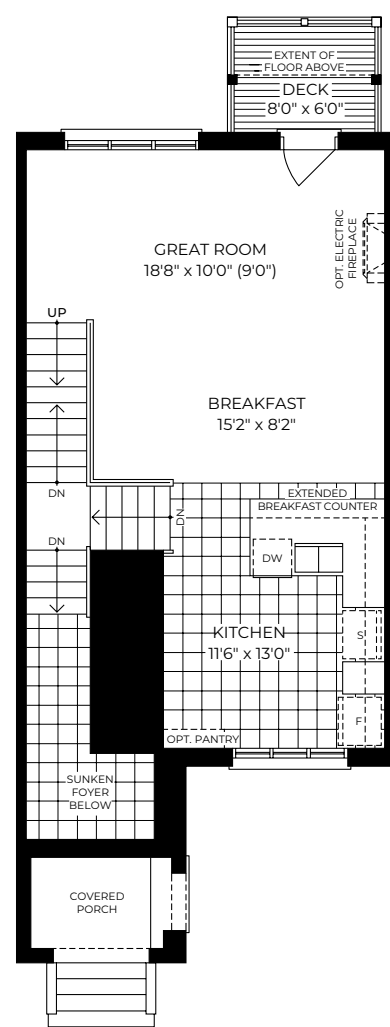
+ 317 SQ.FT. OPT. FINISHED BASEMENT



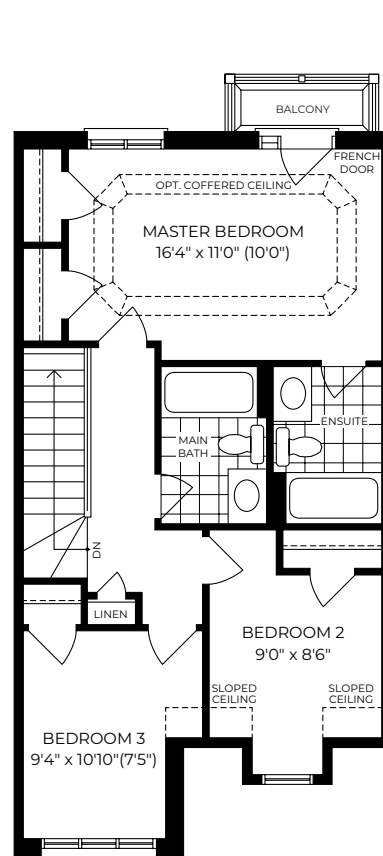
Basement



Ground Floor

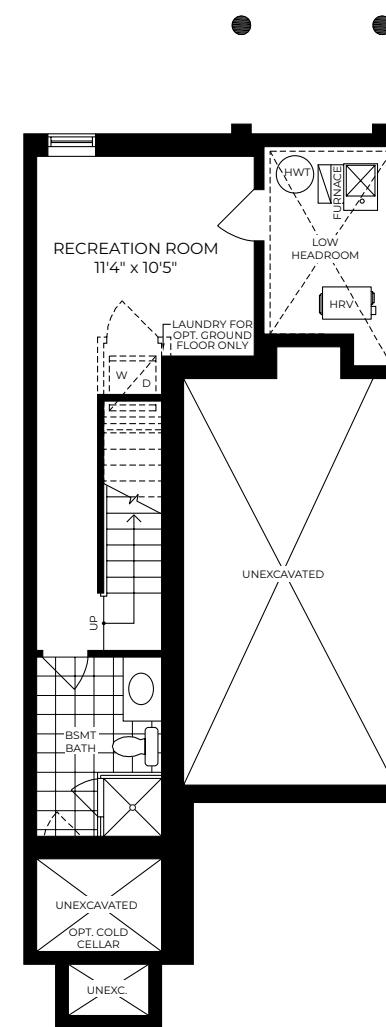


Main Floor



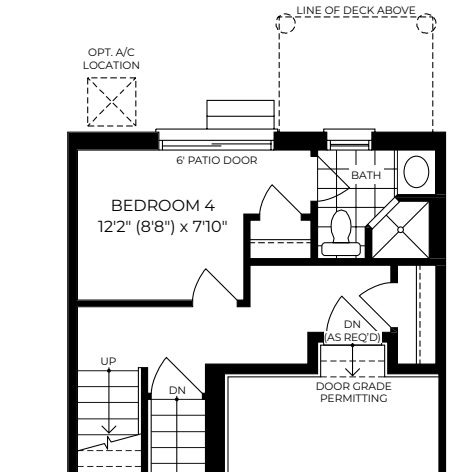
Upper Floor

## Options



Basement

1) Finished w/Rec. Room



Ground Floor

2) Fourth Bedroom